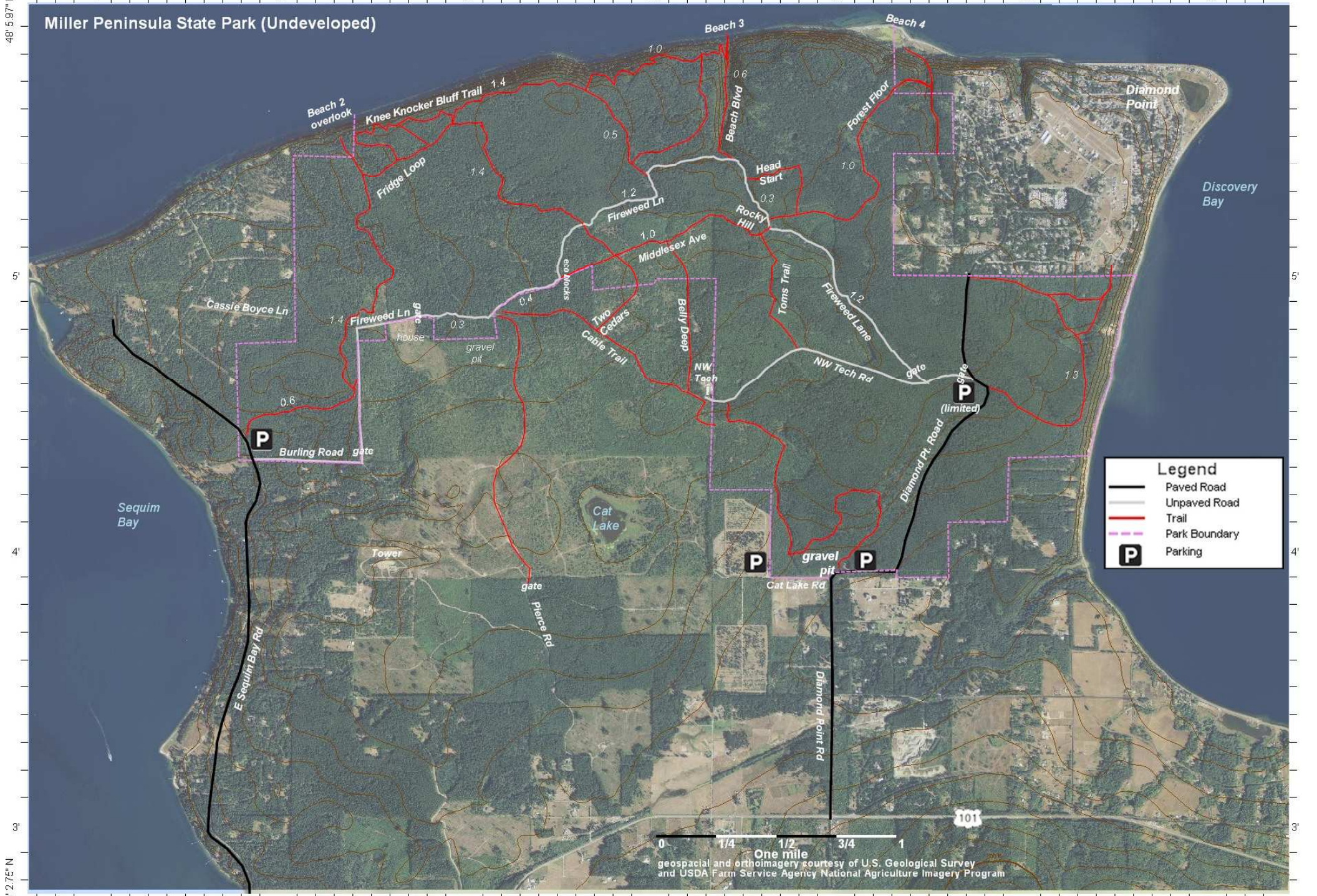


123° 141' W 1' 0' 59' 58' 57' 56' 55' 122° 54.56"

# Miller Peninsula State Park (Undeveloped)



**Legend**

- Paved Road
- Unpaved Road
- Trail
- Park Boundary
- Parking

0 1/4 1/2 3/4 1  
 One mile  
 geospatial and orthoimagery courtesy of U.S. Geological Survey  
 and USDA Farm Service Agency National Agriculture Imagery Program

48° 5.97' N 1' 0' 59' 58' 57' 56' 55' 48° 2.75' N